



DCS2000 DEMENTIA CARE SYSTEM USER GUIDE

Contents

1. INTRODUCTION	3
2. TYPICAL ROOM LAYOUT	4
3. DCS 2000 CONTROL PANEL	5
4. ON / OFF	6
5. SELECTING PROFILES	7
6. STATUS DISPLAY	8
6.1 On	8
6.2 Profile	8
6.3 Sensors	8
6.4 Alarm	9
6.5 Off	9
7. ALARM	9
8. ALARM RESET	10
9. LIGHT CUE	11
10. QUICK REFERENCE	12
11. TROUBLESHOOTING	13
12. SYSTEM TESTING	14
13. SITE SPECIFIC OPTIONS	15

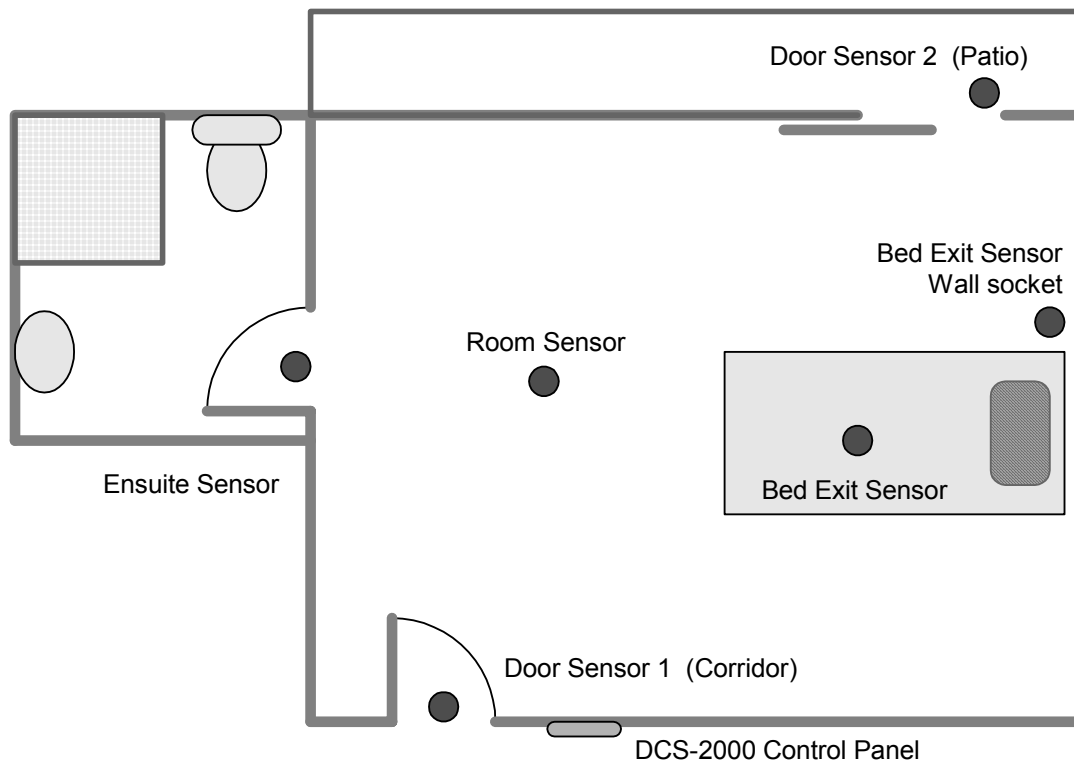
1. INTRODUCTION

The DCS 2000 is designed as a non-intrusive system for residents who may require assistance when confused. The level of monitoring is determined by pre-defined selected profiles.

Primarily, the system will be used during the night. Several movement sensors are located within the residents room. The bed sensor is the master sensor, ie. When the resident is in bed all other sensors are 'off'. When the resident leaves the bed, the DCS 2000 monitors the resident's activity through a series of movement detectors. If the resident's activity varies from the selected profile, an alarm will be raised.

2. TYPICAL ROOM LAYOUT

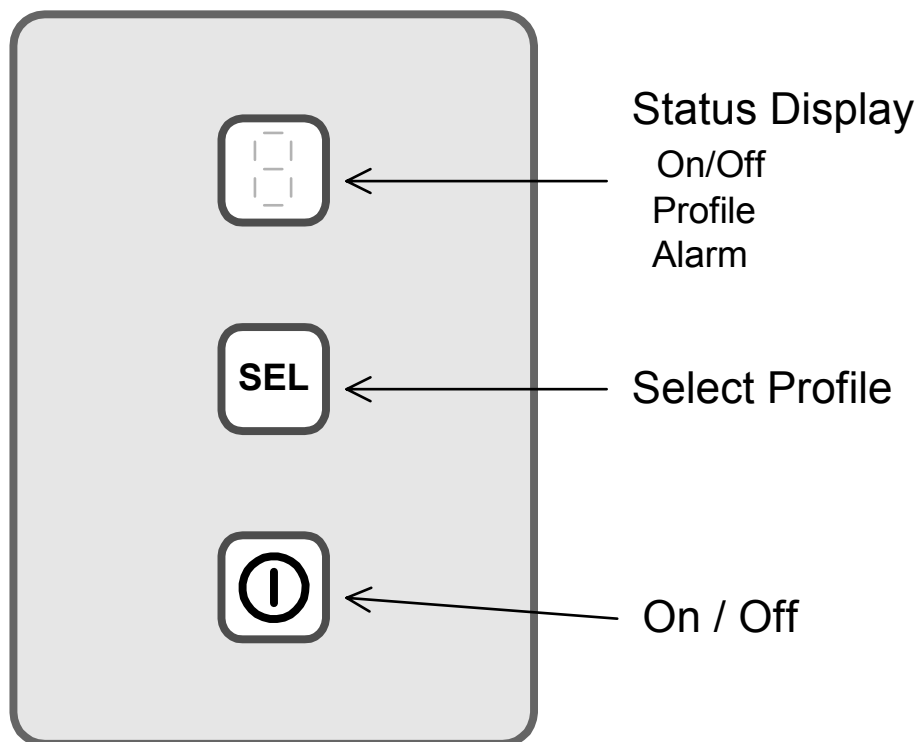
All sensors are located inside the resident's room.
The following diagram shows their usual location:



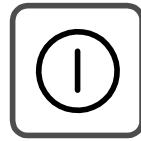
- 1) *refer to bed exit sensor manufacturers details regarding placement of bed exit sensor.*
- 2) *Refer to Section 13, Site Specific Options, for installed sensors.*

3. DCS 2000 CONTROL PANEL

The DCS 2000 control panel is located immediately outside each residents room.



4. ON / OFF



Hold down the On/Off switch for 3 seconds to start the system. The current selected profile number will display for 5 seconds during which time the profile may be changed (Refer Section 5, Selecting Profiles).

While the system is on, an 'on' indicator light will remain on the display.

Turn the system off by holding down the On/Off switch again for 3 seconds. The 'on' indicator will go out and the system is disarmed.

The system has an option of automatically turning off after 8 hours from being turned on (Refer Section 13, Site Specific Option, to see if this option is enabled).

5. SELECTING PROFILES

SEL

The DCS 2000 has the choice of 16 different profiles to allow for the best match to suit each resident. The following table indicates the time which will elapse prior to an alarm.

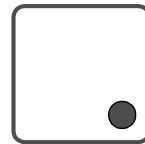
Profile	Out of Bed	Ensuite	Room	Door 1 (Corridor)	Door 2 (Patio)	Ensuite Light Cue
0	Immed.	N/A	N/A	N/A	N/A	N/A
1	2 min	1 min	30 sec	Immed.	Immed.	50 sec
2	3 min	2 min	30sec	Immed.	Immed.	1¾ min
3	4 min	2 min	1 min	Immed.	Immed.	1¾ min
4	5 min	3 min	2 min	Immed.	Immed.	2½ min
5	5 min	4 min	1 min	Immed.	Immed.	3½ min
6	8 min	5 min	2 min	Immed.	Immed.	4½ min
7	8 min	5 min	3 min	Immed.	Immed.	4½ min
8	10 min	6 min	2 min	Immed.	Immed.	5 min
9	10 min	6 min	3 min	Immed.	Immed.	5 min
A	10 min	8 min	1 min	Immed.	Immed.	7 min
B	15 min	5 min	10 min	Immed.	Immed.	4½ min
C	15 min	10 min	5 min	Immed.	Immed.	8½ min
D	15 min	N/A	N/A	10 sec	Immed.	N/A
E	20 min	10 min	10 min	Immed.	Immed.	9 min
F	20 min	N/A	N/A	10 sec.	5 min	N/A

To select a profile the system must first be turned 'On' (Refer Section 4, On/Off,). The current profile setting is displayed. Hold down the "SEL" switch for 3 seconds to step to the next profile. Continue until the desired profile number is displayed. Valid profile numbers range from 0 -9 and A – F.

Once a suitable profile has been selected, the profile number will clear from the display after 5 seconds. The 'on' indicator will remain lit and the system is now active.

The 5 second timeout is restarted with every press of the 'SEL' switch, however, if the profile number clears before reaching the desired profile, turn the system off then on again.

6. STATUS DISPLAY



The status display indicates the systems current status.

6.1 On

When the system is turned on, the 'on' indicator will remain lit.

6.2 Profile

When the system is turned on, the current profile setting is displayed for 5 seconds (during which time the profile may be changed). Profile numbers range from 0 – 9 and A – F.

6.3 Sensors

The location, when movement is detected, is given by displaying the following characters:

b =	Out of bed
E =	Ensuite
r =	Room
d =	Corridor Door
p =	Patio Door

6.4 Alarm

When an alarm is raised, the location of the alarm is indicated by flashing the sensor character as shown in Section 6.3, Sensors.

6.5 Off

When the system is turned off, the status display is cleared.

7. ALARM

If the time period is exceeded an alarm signal is sent to the emergency/nurse call system, identifying the room and/or bed number.

The DCS2000 Control Panel will display one of the following characters to indicate the alarmed sensor. The display will continue to flash this character until the alarm is reset.

b =	Out of bed
E =	Ensuite
r =	Room
d =	Corridor Door
p =	Patio Door

8. ALARM RESET

An alarm can be reset in two ways:

a) **Automatic Reset**

If the bed is re-occupied after an alarm is triggered, the alarm will automatically reset. The status display will revert to the 'on' indicator.

b) **Manual Reset**

To reset an alarm manually, press the On/Off button which turns the system off and resets the alarm.

In some situation, pressing the room's emergency/nurse call cancel button may also be required.

Note: If an alarm is manually reset and the system turned on again after the bed is re-occupied, the 8 hour automatic off timer will start from the time the 'on' button is pressed.

9 LIGHT CUE

Light cuing operates as follows:

Immediately the bed is sensed to be un-occupied, a light in the ensuite is turned on.

The ensuite light will remain on until:

- a) The light cue time period is reached (Refer Section 5, Selecting Profiles, Table 1).
Note: the ensuite light cue timer starts when the ensuite is entered.

or

- b) the room sensor is detected following the ensuite sensor.

or

- b) the time period of any sensor is exceeded and an alarm is set.

In all of the above cases, the ensuite light will turn off and the over-bed light will turn on.

If the ensuite is entered for a second time, the pattern is not repeated, ie. The over-bed light will remain on and the ensuite light will remain off.

The over-bed light will turn off if:

- a) the bed is re-occupied

or

- b) the system is turned off either manually or automatically.

10 QUICK REFERENCE

- a) Turn the system on by pressing the On/Off button.
 - (i) the 'on' indicator will illuminate
 - (ii) the current profile will display for 5 seconds.

- b) Select profile by pressing the "SEL" button.
 - (i) after 5 seconds the selected profile will clear from the display.
 - (ii) the 'on' indicator will remain on and the system is armed

- c) Reset the alarm by either:
 - (i) making sure the bed is occupied
 - or**
 - (ii) manually resetting by pressing the On/Off button to turn the system off.

- d) Turning the system off by either
 - (i) Automatic 8 hour off from the time the system was turned on, only if this option

is enabled (Refer Section 13, Site Specific Options)

or

- (ii) Manual turn off by pressing the On/Off Button.

11 TROUBLESHOOTING

If the system does not seem to be functioning correctly, check the following:

When the system is turned on, the 'b' character for "out of bed" displays directly after the profile:

- is the bed occupied?
- Is the bed sensor plugged in?
- Is the bed sensor correctly placed?
- Is the bed sensor damaged?

The 'b' character does not display when the bed is unoccupied:

- Check that the bed sensor cable is not pinched or damaged.
- Replace the bed sensor and/or cable.

12 SYSTEM TESTING

The system should be tested regularly for correct operation. Ideally this should be carried out by two people, one to view the status display while the other triggers the devices.

First select a profile that will allow sufficient time out of bed, then trigger the sensor devices in turn and watch the status display change. Any irregularities should be reported to maintenance.

Option 1 may be disabled (Refer Section 13, Site Specific Options). If so, an alarm condition from each sensor will need to be raised to test for correction operation.

13 SITE SPECIFIC OPTIONS

Site Name.....

Sensors Fitted

	Yes	No	Reed Switch	Movement Sensor
Bed Exit.....	<input type="checkbox"/>	<input type="checkbox"/>		
Room.....	<input type="checkbox"/>	<input type="checkbox"/>		
Ensuite.....	<input type="checkbox"/>	<input type="checkbox"/>	<input type="checkbox"/>	<input type="checkbox"/>
Door (Corridor).....	<input type="checkbox"/>	<input type="checkbox"/>	<input type="checkbox"/>	<input type="checkbox"/>
Patio Door.....	<input type="checkbox"/>	<input type="checkbox"/>	<input type="checkbox"/>	<input type="checkbox"/>

Note: If Reed Switches are fitted to doors, the doors must be kept closed for correct operation.

Other Notes.....

.....

.....

Options

- | | Enabled | Disabled |
|--|--------------------------|--------------------------|
| 1. Three second delay on button Use.
(default disabled) | <input type="checkbox"/> | <input type="checkbox"/> |
| 2. 8 hour automatic off.....
(default enabled) | <input type="checkbox"/> | <input type="checkbox"/> |

Notes.....
.....
.....

Options

- | | Yes | No |
|------------------------|--------------------------|--------------------------|
| 1. Ensuite Light..... | <input type="checkbox"/> | <input type="checkbox"/> |
| 2. Over-Bed light..... | <input type="checkbox"/> | <input type="checkbox"/> |

Notes.....
.....
.....